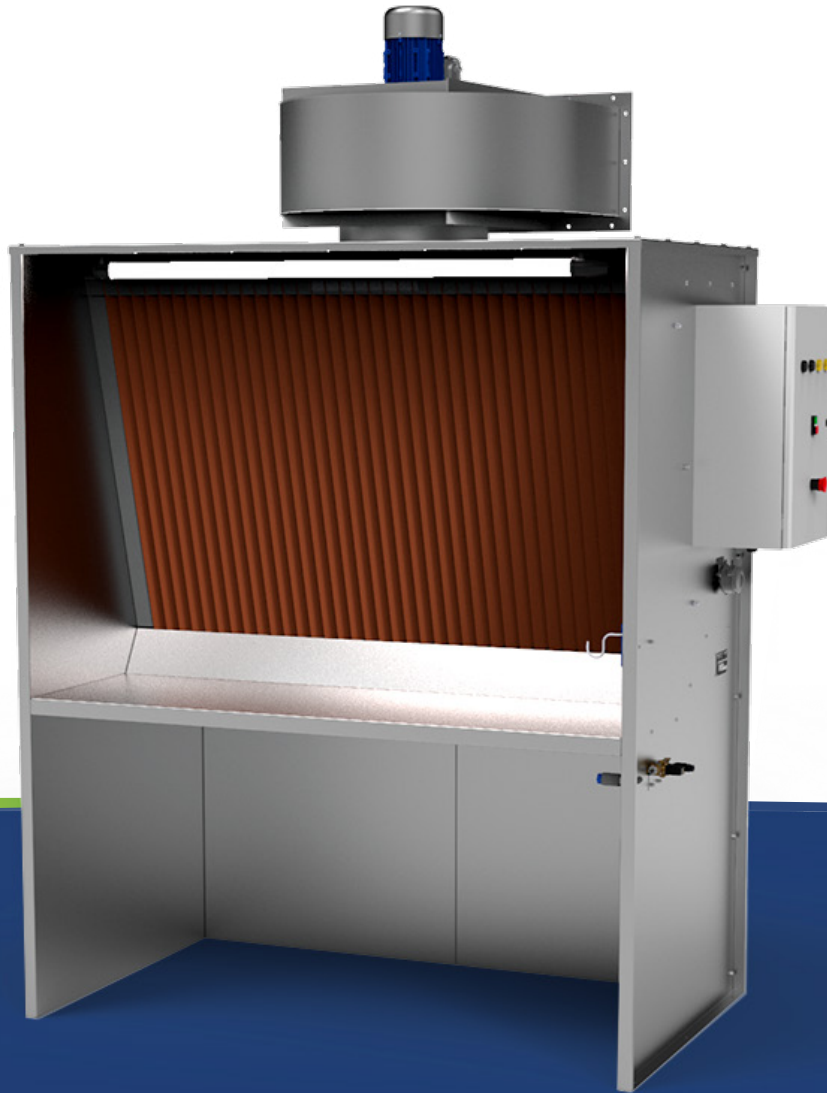


Invented, designed and manufactured  
in Mirebeau (86) in France



# Airbrush booth

[stivent.com](http://stivent.com)

**STIVENT INDUSTRIE®** offers a spray booth designed to remove Volatile Organic Compounds (VOCs).

## Modularity - Efficiency - Personal protection - Quality - Reliability

**Specifically designed to improve the working conditions of operators and prevent the spread of pollutants in your workshops.** This spray booth is used for sucking up and spraying products such as solvents and paints involving an ATEX risk. The air is discharged outside the building, with or without activated carbon filtration.

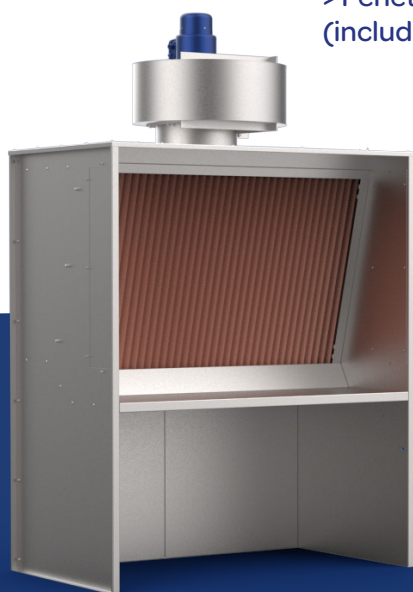
### OPERATIONS

- > Spraying
- > Desolvation



### POLLUTANTS

- > Paints
- > Solvents
- > Fumes
- > Smells
- > Varnishes
- > Glues
- > Enamel
- > Penetrant  
(including ATEX risks)



### OUR COMMITMENTS

- > **Ergonomic**, sitting/standing working position thanks to a built-in work surface
- > **Efficient**, air speed greater than 0.5m/s. at the booth entrance
- > **Filtration**, double-layer filtration captures spray droplets, activated carbon filtration possible
- > **Easy to maintain**, a sensor indicates when the droplet filters need to be replaced. They are accessible from the front of the booth without any specific tools
- > **Discrete**, noise level less than 75 dB (measured on the work surface)

## SECTORS OF ACTIVITY




Publishing,  
communication  
and printing

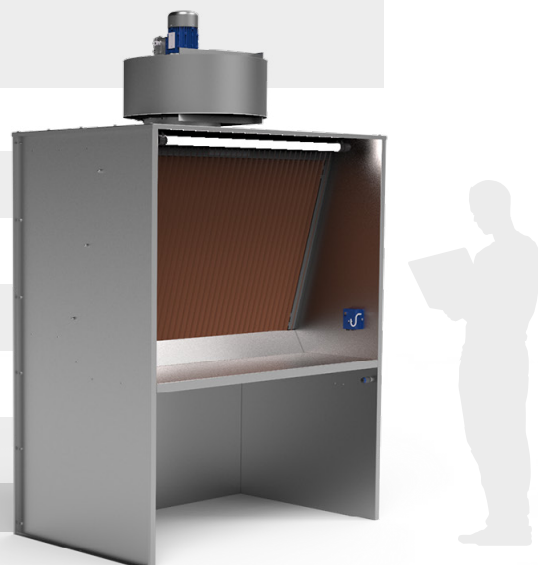


Aeronautics  
& Space



Automotive &  
Transportation

Description		Specific changes
<b>Dimensions in mm</b> (D x W x H) overall	1180 x 1600 x 2800	
<b>Overall dimensions (WxH)</b>	1600 x 2000	
<b>Weight in kg</b> (excluding options)	470	
<b>Average minimum speed in m/s</b> at the booth entrance	0,5	
<b>Maximum flow rate in m³/h</b>	3250	
<b>Power kW</b>	0,70	
<b>Sound Level dB</b>	68	
<b>Warranty 1 year spare parts and labour excluding consumables</b>		



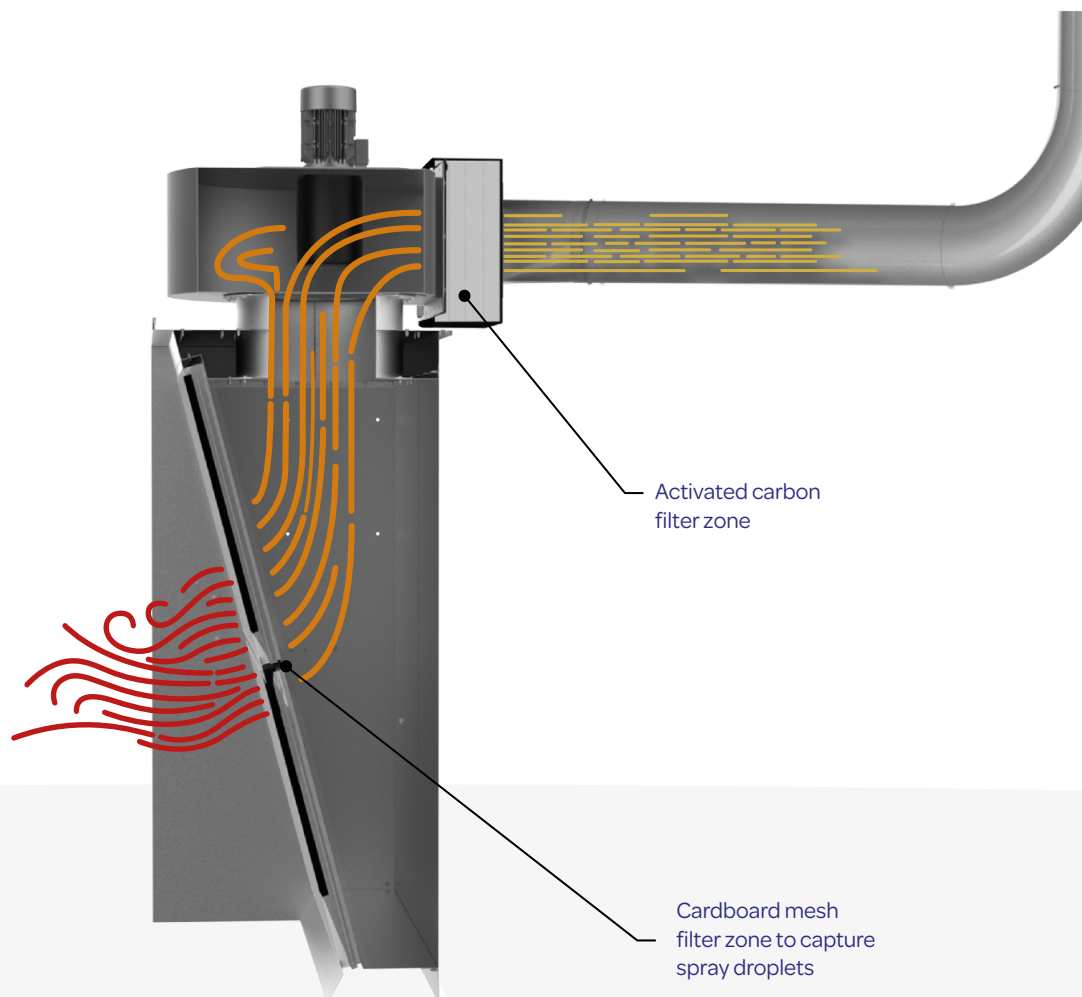
## AIR ROUTING AND TREATMENT


  
 Direction of air movement


  
 Dirty air **ATEX Zone 21**

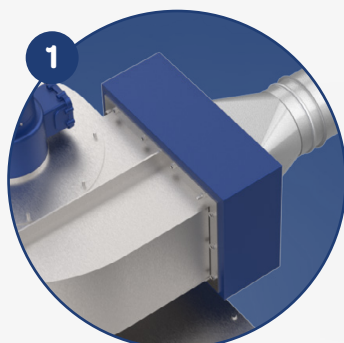

  
 Gas **ATEX Zone 21**


  
 Activated Carbon - Clean Air

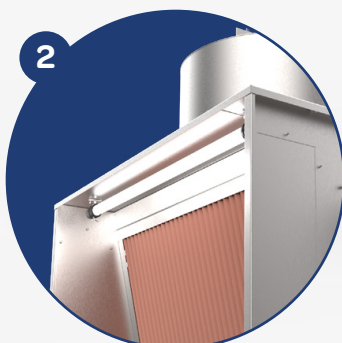


## SUCTION TABLES MANUFACTURED IN STANDARD OR CUSTOMISED FORMATS

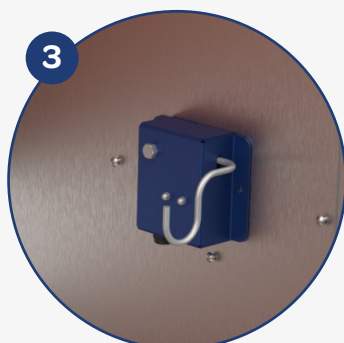
A wide range of options are available on request, including:



Option  
**Activated carbon box**



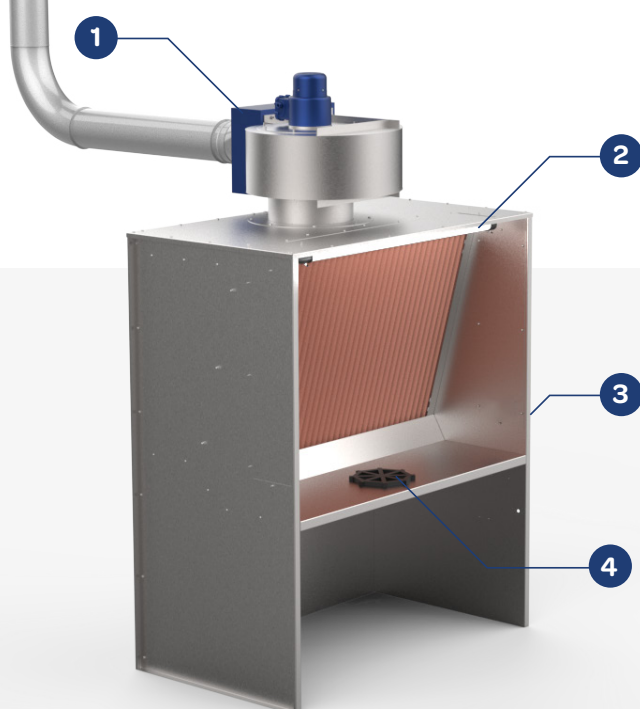
Option  
**Lighting**



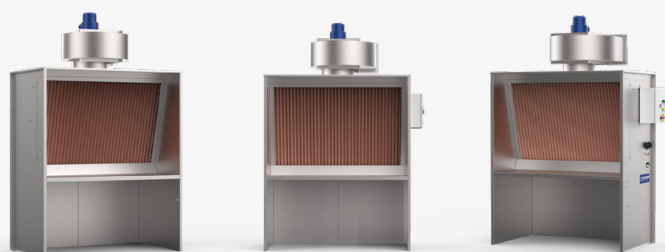
Option  
**Gun holder**  
(positioned outside)



Option  
**Turntable**



- > Adaptation of tools (e.g. turntable)
- > ATEX lighting (LED or neon)
- > Filtration by activated carbon and/or absolute filter
- > Stainless steel construction
- > Adaptation for spray gun holder and/or paint spray holder
- > Front strap curtain
- > Swivel outlet



## STANDARDS

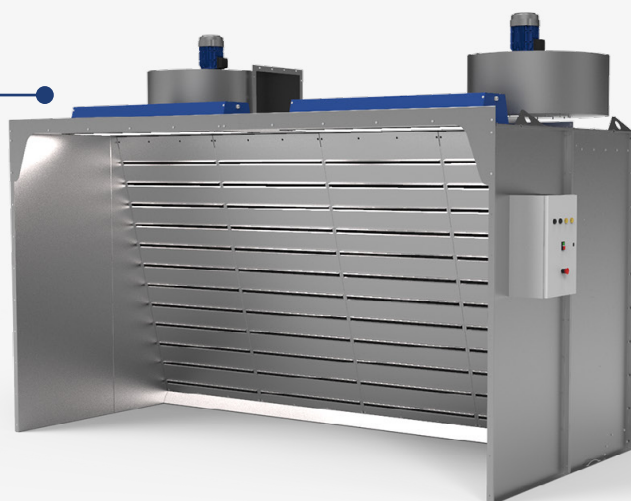


They are **self-certified ATEX**, for the use of hazardous materials. A unitary LCIE certification is possible on request.

## ARE YOU LOOKING FOR SIMILAR PRODUCTS?

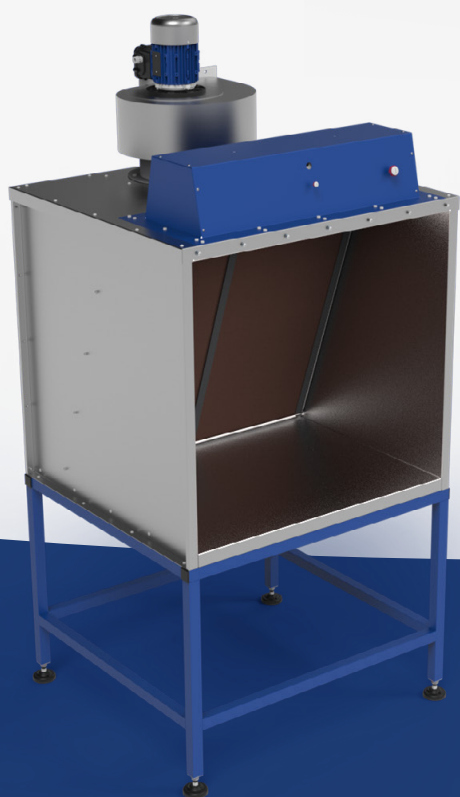
Are you looking for a solution for your  
large component spraying operations?

### Spray booth



Do you need a lightweight camera for your  
touch-ups and varnish spraying?

### Indi booth



**STIVENT INDUSTRIE®, EXPERTS FOR VENTILATION SOLUTIONS.** Since 1962, STIVENT INDUSTRIE® is specialized in planning, manufacturing and installation of equipment for air treatment and industrial dust removal.

Whether you want to improve working conditions of the operators, ensure the safety of materials and workers or protect the environment, STIVENT INDUSTRIE® proposes complete solutions and solutions made to measure.

**DO YOU HAVE A PARTICULAR NEED?  
CONTACT US**

All our products  
are available at  
**stivent.com**







ZI de la Madeleine  
6 rue de la communauté  
86110 Mirebeau  
France

**05 49 50 41 91**  
**contact@stivent.fr**

You find our latest news at  
[stivent.com](http://stivent.com)



**DISCOVER OUR PRODUCTS ON**  
**[stivent.com](http://stivent.com)**



 **Together,**  
let's master the air of the future®

[stivent.com](http://stivent.com)